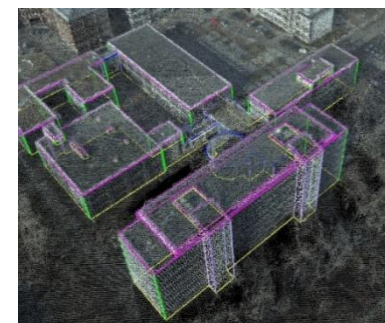
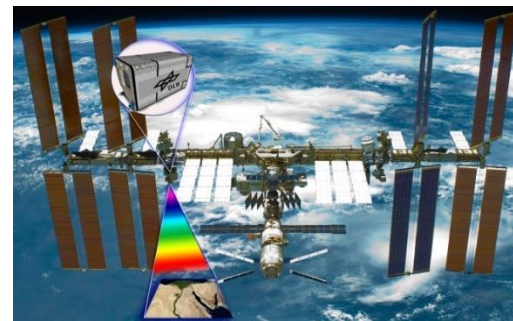
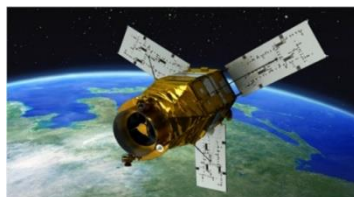




Live-Lage

Real-time Mapping for Improved Situation Awareness in Disaster Management

Ralf Berger, German Aerospace Center (DLR)





Live-Lage | Limitations of Current Drone Use

- **Situational awareness is critical**
- **Aerial perspective is essential**
- **Drones widely used but limited**
- **Efficiency gap in complex operations**





Live-Lage | From Chaos to Clarity

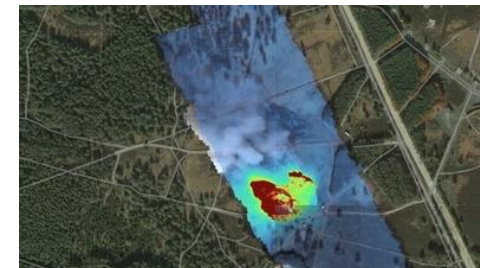
- **On-board geospatial processing**
= Continuously updating live map
1. **VTOL platform for efficient coverage**
 2. **MACS camera + real-time algorithms**
 3. **Direct C2 integration (standard interfaces)**
- ➔ **Instantly shareable operational picture**

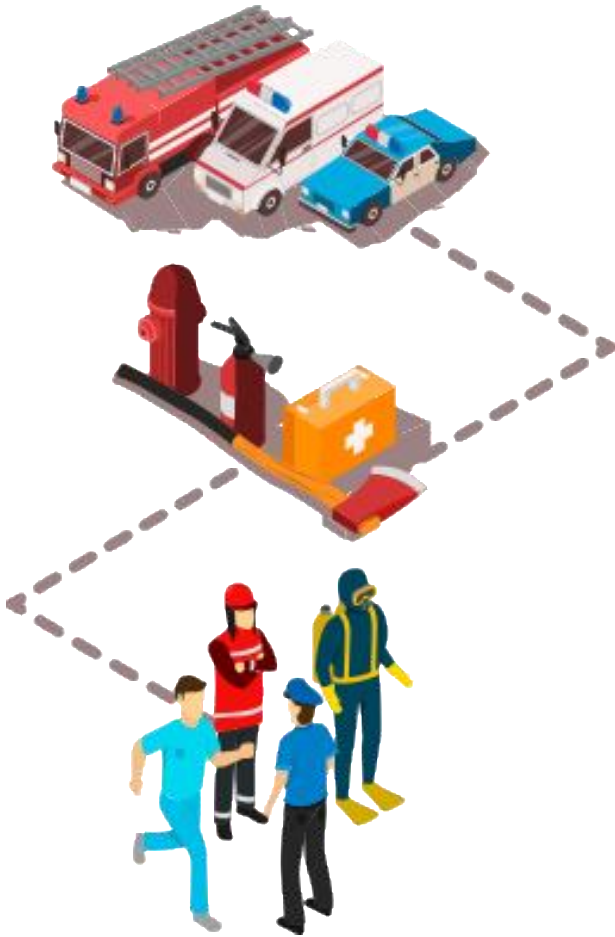




Live-Lage | Already Operational in Real Missions

- **3+ years in regular use** (Duisburg Fire Department)
- **2023 Türkiye earthquake** (for I.S.A.R. and THW)
- **Major wildfire operations in Germany**
- **Multiple national civil-protection missions**





THANK YOU!

Ralf Berger
Head of Dept. Security Research & Applications

German Aerospace Center (DLR)
www.dlr.de/wr

ralf.berger@dlr.de



linkedin.com/company/optsal



Funded by
the European Union